

Overture

online

FAIR SHARE FOR MUSICIANS



**AFM Musicians Across the Nation are Organizing
for Equity in Streaming Media**

Local 47 Unveils New Capt. Greg
Welch Gathering Place

2022 Local 47 Election:
Nominating Petitions Due 9/15

Overture

online

- Official monthly electronic magazine of the
American Federation of Musicians Local 47 -

ISSN: 2379-1322

Publisher: Editor: Danita Ng-Poss

AFM Local 47

3220 Winona Ave. Managing Editor /

Burbank CA 91504 Layout / Graphics /

323.462.2161

Advertising:

www.afm47.org

Linda A. Rapka

AFM LOCAL
47

Message From the Editor

Please be aware that until further notice, AFM Local 47 will not be publishing, due to cost-saving measures, a print Overture Magazine. We will continue to publish our monthly digital e-magazine, Overture Online, and will continue email blasts and our Local 47 Beat email newsletter.

In order to better serve you, Local 47 is looking at every possible way to cut costs and save on administrative expenses. One simple yet effective step all members can take to help us reduce expenses is to add your current email address to your Directory profile. This allows us to ensure that you receive timely updates from Local 47 in the most cost-effective way possible.

Please update your Directory profile with your current email and notification preferences by filling out the update form at afm47.org/directory or call 323.462.2161. Thank you!

AFM LOCAL 47 EXECUTIVE BOARD & COMMITTEES

Titled Officers

President Stephanie O'Keefe

Vice President Marc Sazer

Secretary/Treasurer Danita Ng-Poss

Trustees

Bonnie Janofsky, Michael Lehmann

Boddicker, Doug V. Tornquist

Directors

Giovanna Moraga Clayton,

Allen Fogle, Pam Gates,

Norman S. Ludwin, Phil O'Connor,

Bill Reichenbach

Hearing Board

Allen Savedoff (Chair), Rachel Berry,

Alan Estes, Paula Fehrenbach,

Elizabeth Hedman, Marisa McLeod,

Robin Ross

Delegates to AFM Convention

Pam Gates, Bonnie Janofsky,

Danita Ng-Poss, Phil O'Connor,

Stephanie O'Keefe, Marc Sazer

1st Alternate Delegate

Allen Fogle

2nd Alternate Delegate

Allen Savedoff

Election Board

David Wheatley (Chair),

Cary Belling, Dave Kossoff,

Kris Mettala, Nancy Roth,

Nick Stone, Marcy Vaj

Fair Employment Practices Committee

Ray Brown, Beverly Dahlke-Smith,
Wendell Kelly

Grievance Committee

Ray Brown, Johana Krejci,
Lesia Terry

Hearing Representative

Lydia Reinebach

Legislative Committee

Bonnie Janofsky (Chair),

Chris Glik, Lisa Haley,

Lydia Reinebach, Louis Rovner

Orientation Committee

Norman S. Ludwin, Danita Ng-Poss,

Stephanie O'Keefe

Relief Committee

Ed Vodicka (Chair), Gary Lasley,

Lydia Reinebach, Doug V. Tornquist

Salary Review Board

Nick Stone (Chair),

Michele Forrest, Sidney Hopson,

Preston Shepard, David Wheatley

Wage Scale Committee

Phil O'Connor (Chair),

Judy Chilnick, P. Blake Cooper,

Bonnie Janofsky, Danielle Ondarza



Contents

Navigate back to Contents by tapping the "O"

Overture Online / Vol. 8 No. 8 / August 2022 / afm47.org

Columns

FAIR SHARE FOR MUSICIANS



**AFM Musicians Across the Nation
are Organizing for Equity
in Streaming Media**

Features

AFM LOCAL 47 2022 GENERAL ELECTION

- Nominating Petitions Due Sept. 15
- Election Day Dec. 13



**Member Spotlight:
Carol Kaye**



Local 47 Unveils the Captain Greg Welch Gathering Place

EDUCATION SESSION
SUNDAY, AUGUST 14
7 PM @ AFM LOCAL 47
3220 WINONA AVE BURBANK CA 91504
All AFM members are invited!

**'Fair Share for Musicians' Campaign
Education Session: August 14**



**New Resources Available From
the Pension Fund**

DO WE HAVE ROYALTIES FOR YOU?



More than \$550 Million Distributed to Musicians & Vocalists

Royalties Distributed to Both Union & Non-Union Session Musicians & Vocalists For Their Performance on Songs Played on Satellite Radio, Non-Interactive Streaming Services, Webcasts, Other Digital Formats and Certain Music Performed on Film & Television

Find Out If We Have Royalties For YOU

www.afmsagaaftrafund.org

  **SAG-AFTRA**
Intellectual Property Rights Distribution Fund

The AFM & SAG-AFTRA IPRD Fund is a 501(c)(6) non-profit organization - est. 1998
4705 Laurel Canyon Blvd., Suite 400, Valley Village, CA 91607
p. 818.255.7980 | f. 818.255.7985 | www.afmsagaaftrafund.org



President Stephanie O'Keefe



“Two years ago, Local 47 lost a true friend. A sensitive, kind, intelligent, and perceptive man, Greg Welch understood as well as any of us the true meaning of the word, ‘union.’ And he appreciated what it meant for us to come together and play music.

“Daily, Greg watched over our building and delighted in the many friendships he formed with both the staff and musicians. We were united by our love and concern for him and blessed by the care and protection he so selflessly gave to us all. When Greg passed from this life, each of us knew we had lost someone very special.

“What is a Union if not a place to join together, to become, as the word’s Latin origins denote, one? It seems then, that a place to gather is essential for us to carry on the very important work that lies before us.

“Tonight, I am so very pleased to announce the dedication of this room, that has brought us all together, as the Captain Greg Welch Gathering Place.

“I now call this meeting — the first of many important gatherings — to order.”

With these words I delivered at our July General Membership Meeting, Local 47 took a step into the future – a future that allows us to gather, to discuss, to plan, to rehearse, in a beautiful, large, open space, sorely needed these last five years. Finally, we can gather in sufficient number to be inclusive and to address the work at hand.



Members gathered for the first time in our newly unveiled Gathering Place, named in honor of beloved Captain Greg Welch, located in the foyer of our rehearsal rooms, at our General Membership Meeting on July 25, 2022. Learn more about the new space in the [At the Local](#) section of this issue.



Our In Honorarium display of Captain Greg Welch (1957 - 2020) reads: "Friend to all Musicians. We will always remember you."

And what is this “work” at hand? It is the continued negotiation of local collective bargaining agreements, the enforcement of existing agreements, and the preparations for our participation in the negotiation of a crucial successor to the Motion Picture/ TV Film Agreement. Why is this agreement crucial? Because streaming, and its lack of an adequate pay structure, is crucial to the continuation of our profession. While you may feel that this type of work does not affect or involve you, make no mistake that an intent to devalue music and the musicians who create it is, in my opinion, endemic in our society. The public no longer feels the need to offer fair pay for ANY recorded music, and often sees no difficulty in paying little or nothing for live music, as well.

Daily, I remind myself that we create what they cannot – and united, we will insist on the dignity and respect we deserve.

In solidarity,
Stephanie

Vice President Marc Sazer



July has seen real progress in the reopening of our **rehearsal rooms** here at Local 47. We have removed our COVID testing requirement and opened up more time slots. Just this week, we have six different bands, along with a regular weekly UCLA class, using our facilities! We will also have a whole new space available for larger groups; we have had the large countertop island that criss-crossed the open area removed, creating a brand-new, open and spacious meeting area that can also be reserved for large ensemble rehearsals!

It has been great to begin working in a coordinated way on the campaign for a fair streaming contract. The campaign has a new name: **“Fair Share for Musicians,”** and a new website: fairshareformusicians.org. We are all working together; the AFM, Local 47, the RMA and the Contract Action Team — this will take all hands on deck!

So what’s Fair Share for Musicians all about? Musicians are working more and more on shows for subscription streaming services, whose U.S. revenues are expected to hit \$25 billion this year (up 13% from 2021). In 2019, streaming shows represented 14% of all of our film and TV wages. So far this year, that number is 59%. But without meaningful residuals for that work, musicians are finding it increasingly difficult to see a future for themselves here, or even just make ends meet. The unfairness is driven home when we work on shows with singers — SAG-AFTRA session singers get paid residuals working on the very same projects, performing the same music for the same composers as us. But we don’t get residuals. Why? Because the studios just say no to us.

For over a thousand musicians here in L.A. who do this work (alongside musicians in New York, Chicago and elsewhere) this issue is front and center and critical. But others might have questions.

I don’t work on streaming shows, or for film or TV shows. Why should I care about this?

Work dues and membership dues from the players in this field support our Local, support our rehearsal rooms, our staff, our membership department, and all of the other important parts of our union.

When the Film Fund grows, so does the Pension Fund. In 2022, recording musicians’ film/TV residuals contributed \$1,930,521 unallocated dollars to the Pension Fund – dollars that go to all vested AFM musicians, dollars that strengthen the Pension Fund.

Work dues and membership dues from the players in this field support our Local, support our rehearsal rooms, our staff, our membership department, and all of the other important parts of our union.

So why don’t we just go to SAG-AFTRA and other powerful unions and get them to stick up for us?

Unions help those who help themselves, but ultimately we all have to fight our own battles.

Okay, how can I help?

Step one – sign the petition! When we let you know about actions we might take, come on out and join us. Strength in numbers is real, and when we have each other’s backs it’s good for all of us! Check out fairshareformusicians.org for the petition and more info.

The development of **our new database, Ensemble 2 (E2)**, is in full swing. The database system will run a new and improved member portal that will allow you to see and update your information, get a much clearer picture of your membership dues and work dues, automate your payments and download information 24/7. The new system will also improve processes for us inside the building in Burbank, allowing greater flexibility in producing reports, managing administrative functions and interacting with technology.

The development process has required a tremendous amount of testing and debugging, and all of our staff here have pitched in. Even as they are under tremendous time pressure taking care of processing and mailing your checks, working with you on membership issues and all the other crucial tasks that they do every day, staff have been participating in regular Zoom sessions with our computer programmer with my participation. Once E2 is fully launched we will all owe every one of our staff people here our thanks!

We have also been active in building **relationships with other unions, and the labor movement** in our region. Last week I attended the monthly meeting of the LA County Federation of Labor with Linda Rapka, 47 Communications Director (Linda and I are both Delegates to the Federation). We were able to have meaningful conversations about our upcoming campaign and other issues with members of SAG-AFTRA, the IBEW, Unite Here, the Animation Guild and more.

Compliance with our media contracts is ongoing, and incredibly necessary. When a major film studio takes hundreds of thousands of dollars of scoring work overseas, even though their contractual obligation is to score it here, we have to be vigilant. The AFM has been responsive and active, but they can only act when we alert them. We are most effective when we all work together — members, our Local, our Player Conferences and the Federation all pulling in the same directions. Step by step!

Secretary/Treasurer Danita Ng-Poss



Photo by Mustafa Sayed

WHAT OUR MEMBERSHIP DUES DO FOR US

As Secretary/Treasurer I am responsible for monitoring our Local's money and supervising our membership department. These two responsibilities converge in the membership dues we pay, which is why I talk about dues frequently. One question members reasonably ask is, "If I pay \$210 in annual membership dues (\$110 semi-annually), what does that money do for me?" That's a reasonable question, so let's look at what happens to the money you contribute.

Your \$210 annual dues average to about 58 cents per day. That may not sound like much, but that money does a lot of things. Here is a breakdown of how that money is used. The daily amounts have been calculated on a 365-day year and rounded to the nearest penny.

\$124 — LOCAL 47 OPERATING EXPENSES

(59% of your membership dues)

About 34 cents per day goes towards keeping the lights on at Local 47 and paying for all the daily activities of a busy local. This allows your Local 47 to:

- negotiate over 50 local agreements on your behalf
- process checks for the work you do
- pay a staff of over 20 people to serve your needs as a professional musician
- maintain an office where all this work can be done

\$66 — AFM PER CAPITA DUES

(31% of your membership dues)

About 18 cents per day of your membership dues goes directly to the AFM. This is Local 47's per capita work dues. This money paid to the AFM is used for:

- negotiating our national agreements
- making sure lawmakers in Washington, D.C. understand our needs
- paying for AFM staff and facilities
- providing services to Local 47 and other Locals

\$4 — MUSICIANS' CLUB / REHEARSAL ROOMS (2% of your membership dues)

About 1 cent per day goes to the Musicians' Club, your club which owns our building and provides our rehearsal rooms. Rehearsal rooms are provided to you at a very low cost. Our rehearsal rooms are probably the best deal you'll find anywhere. If you run regular rehearsals, this benefit alone is worth more than the total membership dues you contribute. If you aren't aware of this benefit, go to afm47.org/rehearsals.

\$16 — LOCAL 47 DEATH BENEFIT FUND

(8% of your membership dues)

About 4 cents per day funds our Death Benefit Fund. This fund is explained in Article III of our Local 47 bylaws:

"Section 3. Death Benefit Fund: The Death Benefit Fund shall be used to provide the means to furnish a death benefit, through insurance or such other means as the Executive Board may determine, to be paid to the beneficiaries of deceased members of the Local. In addition to payments to beneficiaries, the Fund may be used to pay the cost of floral offerings, music, or other incidental expenses in connection with the funerals of deceased members. The Death Benefit Fund may be maintained by special assessments, benefit concerts or other entertainment, voluntary contributions or legacies, transfers from the General Fund, or such other ways and means as the Local may determine. The Local shall provide a death benefit of not less than \$1,000 for each member in good standing."

Our annual membership dues are vital to maintaining our union. As members, we all agree to contribute our annual membership dues on time. We require this of each other to keep our membership status in good standing. If we fail to meet our obligations as members, we can lapse into suspension of membership or even expulsion. These situations can incur additional fees like the initiation or reinstatement fees.

Here's a tip to make sure this doesn't happen to you: Set your digital calendar now to remind you to contribute your membership dues well before the due date! You may review the Membership Dues renewal schedule at afm47.org/dues. You won't have to scramble at the last minute. Also, you will have guaranteed that your money is used to preserve the professional future for yourself and your musician friends and colleagues.

FAIR SHARE FOR MUSICIANS



AFM Musicians Across the Nation are Organizing for Equity in Streaming Media

Members of the American Federation of Musicians from across the nation are working together to achieve a fair contract from the Alliance of Motion Picture and Television Producers.

For more than a decade, musicians working on made-for-streaming movies and TV shows have been exploited by the multi-billion dollar media conglomerates that make up the Alliance of Motion Picture and Television Producers Association. Recording musicians performing on soundtracks are making (75%) less on content premiering on streaming platforms.

These musicians, like singers and actors, create unique performances that are captured in real time – yet, they are not being compensated accordingly for streaming media. This is because the entertainment industry has fundamentally shifted. Content now premieres primarily on streaming platforms rather than in movie theaters and on network television.

This shift has resulted in considerably less residual income for musicians, threatening our livelihoods. In essence, the talent bringing scores to life is being commoditized without a fair share of the considerable profits made by companies such as Disney, Paramount, Universal, and Warner Bros. This practice is neither fair nor sustainable. Musicians, essential to the streaming economy, demand a fair contract which includes streaming residuals.



Sidney Hopson and other members of the Contract Action Team discuss how an equitable streaming motion picture/TV residual will help all AFM members at our July 25 General Membership Meeting.

Musicians from Los Angeles to San Francisco, Nashville to Chicago and New York are working together organizing the [Fair Share For Musicians](#) campaign. Members of the Contract Action Team spoke to the membership at the Local 47 July 25 General Membership Meeting to discuss the importance of an equitable streaming motion picture/TV residual, and how it would impact ALL musicians within the AFM.

Take Action!

Sign the Petition - [click here](#)

Attend the 8/14 Education Session - The Contract Action Team in Los Angeles will be hosting a Campaign Education Session on Sunday, August 14, 7 p.m. at Local 47 headquarters in Burbank. [Click here](#) for more info and continued updates.



Carol Kaye: Bass Legend

One of the most prolific recorded bass guitarists in rock and pop music, Carol Kaye has played on an estimated 10,000 recordings in a career spanning over 50 years.

Carl began playing guitar in her early teens and after some time as a guitar teacher, began to perform regularly on the Los Angeles jazz and big band circuit. She started session work in 1957, and through a connection at Gold Star Studios began working for producers Phil Spector and Brian Wilson, performing electric guitar on Bob B. Soxx & the Blue Jeans' "Zip-a-Dee-Doo-Dah" and The Crystals' "Then He Kissed Me," and acoustic guitar on The Righteous Brothers' "You've Lost That Lovin' Feelin'."

After a bassist failed to turn up to a session in 1963, she switched to that instrument and quickly discovered she preferred playing bass, and found it was a key component of a backing track and allowed her to play more inventively than the relatively simpler guitar parts she had been playing until then. After bassist Ray Pohlman left studio work to become a musical director, Kaye became the most in-demand session bassist in Los Angeles.

During the peak of her years of session work, she became part of a stable of Los Angeles-based musicians which went by a variety of informal names, but has since become known as "The Wrecking Crew." Her work with the collective as the sole regular female member led to her prominent role in the 2008 documentary film by Denny Tedesco, son of guitarist Tommy Tedesco, titled "The Wrecking Crew."

Throughout the 1960s, while at the time unknown to the public, Kaye played bass on a substantial number of records that appeared on the Billboard Hot 100. She appeared on sessions by Frank Sinatra, Simon and Garfunkel, Sonny and Cher, Frank Zappa, Stevie Wonder, Barbra Streisand, the Supremes, the Temptations, the Four Tops and the Monkees. She played electric bass on Nancy Sinatra's "These Boots are Made for Walkin'," while Chuck Berghofer played double bass. She also came up with the introduction on fellow session player Glen Campbell's hit "Wichita Lineman." She later said that during the 1960s she would sometimes play three or four sessions per day, and was pleased that so many of them created hit records.

Kaye moved into playing on film soundtracks in the late 1960s, particularly for Quincy Jones and Lalo Schifrin, and began to release a series of tutoring books such as "How to Play the Electric Bass." She became less active towards the end of the 1970s, but has continued her career and attracted praise from other musicians. Kaye has achieved critical acclaim as one of the best session bassists of all time. Michael Molenda, writing in Bass Player magazine, said that Kaye could listen to other musicians and instantly work out a memorable bass line that would fit with the song, such as her additions to Sonny & Cher's "The Beat Goes On." Paul McCartney has said that his bass playing on the Beatles' "Sgt. Pepper's Lonely Hearts Club Band" was inspired by her work on "Pet Sounds." Alison Richter, writing in Bass Guitar magazine, has called Kaye the "First Lady" of bass playing, adding "her style and influence are in your musical DNA."

Kaye's solo bass line in Spector's production of "River Deep, Mountain High" was a key part to the song's "Wall of Sound" production. The recording is now in the Grammy Hall of Fame. Quincy Jones said in his 2001 autobiography Q that "women like... Fender bass player Carol Kaye... could do anything and leave men in the dust." Brian Wilson said that Kaye's playing on the "Good Vibrations" sessions was a key part of the arrangement he wanted: "Carol played bass with a pick that clicked real good. It worked out really well. It gave it a hard sound." Dr. John calls Kaye "a sweetheart as well as a kick-ass bass player."

Despite being admired as one of the studio greats, Kaye never expected to be well-remembered. At the time of the sessions, most of the players thought pop music would not last longer than 10 years, and she is surprised that people still listen to tracks on which she played. In 2020, Rolling Stone magazine ranked Kaye number five in its list of the 50 greatest bassists of all time.

FAIR SHARE FOR MUSICIANS

Same Play, Less Pay! Musicians deserve a fair share of the revenues for made-for-streaming movies and TV shows.

FIND OUT WHAT YOU CAN DO TO PROTECT YOUR LIVELIHOOD IN THE RAPID TRANSITION TO "NEW MEDIA."

EDUCATION SESSION

**SUNDAY,
AUGUST 14**

7 P.M. @ AFM LOCAL 47
3220 WINONA AVE BURBANK CA 91504

All AFM members are invited!
Contact: organizing@afm47.org

FAIRSHAREFORMUSICIANS.ORG



Fair Share for Musicians: Campaign Education Session

Sunday, August 14 - Time TBA

@ Local 47, 3220 Winona Ave. Burbank CA 91504

More details: fairshareformusicians.org

Office Closures

Monday, September 5 - Labor Day

Save the Date:

Next General Membership Meeting

Monday, October 24, 7:30 p.m.

Open to all members in good standing

Executive Board Meetings

Tuesdays, 10 a.m. via Zoom

Members welcome as observers

New Member Orientation

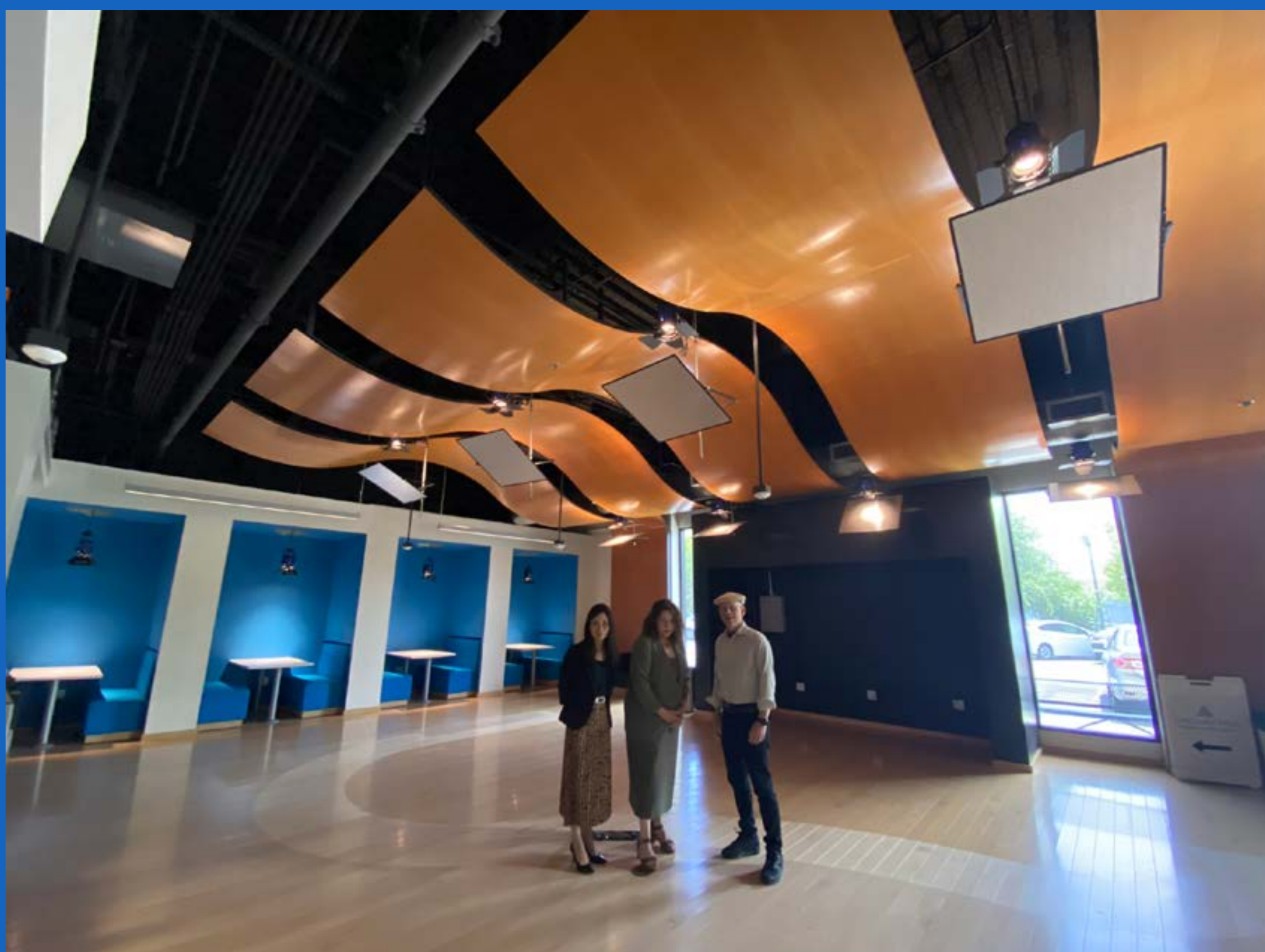
Third Thursdays, 10 a.m. via Zoom

Required of all new members.

For details please visit afm47.org/orientation

View our full calender of events

@ afm47.org/calendar



Titled officers Danita Ng-Poss, Stephanie O'Keefe and Marc Sazer survey the new Captain Greg Welch Gathering Place in our downstairs rehearsal rooms.

Local 47 Unveils Captain Greg Welch Gathering Place

At our July 25 General Membership meeting, members gathered for the first time in our newly unveiled Gathering Place, located in the main foyer of the downstairs rehearsal rooms, named in honor of beloved Captain Greg Welch.

The spacious new area is able to accommodate large events and ensembles, and will serve as a wonderful new resource for generating income for Local 47 as a rental facility. Full details will soon be posted on our website.

About Captain Greg Welch

Our longtime security guard, Captain Greg Welch, was a giant superhero of a man who had been a valued member of our union family since 2008 until his untimely passing on July 7, 2020. He was the warm, friendly figure who was the first to greet staff and members at our offices and downstairs in the rehearsal rooms. He had a true love for not only his job, but for the employees and members with whom he held a wholehearted duty to help and protect. He gave 110% of his effort to the job, pitched-in and helped out in ways that went above and beyond the call of duty, and his example inspired all of us here at AFM Local 47.

AFM Local 47 2022 Triennial General Election

**Nominating Petitions Available August 1,
Election Day December 13**

The next General Election for the AFM Local 47 Executive Board, Hearing Board, and AFM Convention Delegates takes place on Tuesday, December 13, 2022. Nominations will be called for: President (1), Vice President (1), Secretary/Treasurer (1), Trustees (3), Directors (6), Hearing Board (7), AFM Convention Delegates (3), First Alternate Delegate (1), and Second Alternate Delegate (1).

Get involved in your Union's democratic process!

Be sure to review important information on voting on the reverse side of this document, as well as how to run for office for all members interested. To review the Local 47 Bylaws, you may access them in the members-only section of the Local 47 website, afm47.org/user/login (click the "Scales & Documents" tab), or contact the Secretary/Treasurer's Office at 323.993.3159 to request a hard copy.

Should you have any questions about the election please contact a member of the Election Board. Only members of the Election Board — no Local 47 officers or staff members — are authorized to answer any questions concerning the election.

Local 47 Election Board:

David Wheatley (Chair): freshwater@prodigy.net

Cary Belling: bellstir@earthlink.net

Dave Kossoff: dikossoff@yahoo.com

Kris Mettala: krmettala@yahoo.com

Nancy Roth: concertnancer@yahoo.com

Nick Stone: sticksandstone1@gmail.com

Marcy Vaj: marcy.vaj@gmail.com

In order to ensure your eligibility to vote, please be sure your membership is in good standing well in advance of payment due dates! Semi-Annual Membership Dues are due **July 1, 2022**, and must be paid by **September 30, 2022** (within the 90-day grace period) to avoid suspension. Members with Work Dues delinquencies in excess of \$500 have 30 days following the date of the Executive Board meeting at which hearing action is taken to avoid suspension. Dues may be paid online at afm47.org/dues or by calling 323.993.3116.

Eligibility for Office

To be nominated for any office a member must have been in continuous good standing for a period of 365 calendar days immediately preceding **October 1** in any election year. To hold any office, a member must have been in continuous good standing for the period of 365 days immediately preceding the scheduled date of installation of office at the Inaugural Meeting on **January 9, 2023**. It is possible that a member may have been suspended during the prior 365 days and not know — for example, late payment of dues. No member shall hold nor accept nomination for more than one office, although they may additionally accept nomination for and hold the position of Delegate or Alternate Delegate. However, members nominated for the offices of President, Vice President, or Secretary/Treasurer shall not be eligible to accept separate nomination for Delegate or Alternate Delegate. Further, candidates for President, Vice President, or Secretary/Treasurer, because those officers are automatically Delegates, shall not appear separately on the ballot as Delegate (see Bylaw Article IX, Section 2).

Nominating Petitions Available August 1st

Nominating petitions for the upcoming General Election are available from the Secretary/Treasurer's office as of **August 1, 2022**. To request a petition, members may fill out the Nominating Petition Request Form online at afm47.org/election or contact the Secretary's Office at petition@afm47.org or 323.993.3159. All completed nominating petitions with at least 50 signatures from members in good standing must be delivered to the Secretary's Office, in exchange for a signed and dated receipt, no later than 4:45 p.m. on **September 15, 2022**. Please do so early. Members on a slate need only file one petition. Further instructions will be provided to those who request a petition.

Policy Governing Eligibility to Vote

1. All Local 47 members who are in good standing as of 4:45 p.m. (close of business) on **December 12, 2022** — the last business day prior to the General Election — are eligible to cast a ballot. However, members are encouraged to be in good standing well in advance of this deadline.
2. Any Local 47 member who has been suspended or expelled for the non-payment of dues, or wishing to reinstate within one year of resignation, shall have until 4:45 p.m. on **December 12, 2022** by which to clear the delinquency and return to full good-standing status in order to be eligible to cast a ballot.
3. New members, or those rejoining after having resigned or been expelled more than one year ago, must complete and submit a membership application and membership dues payment no later than **December 5, 2022** by 4:45 p.m., so that their membership can be approved at the next Local 47 Executive Board meeting the Tuesday prior to the General Election. All applicable fees apply. (Note: The Local reserves the right to refer applications of all persons seeking reinstatement from resignation to the International Executive Board per Article 9, Section 19 of the Federation's Bylaws.)
4. Life Members in good standing may vote in the Local 47 General Election. Inactive Life Members, who pay a reduced membership fee, are not eligible to vote per our Bylaws. Inactive Life Members wishing to vote may do so by changing their membership status to Life Member by contacting the Membership Department at 323.993.3116 and completing the process by 4:45 p.m. on **December 12, 2022**. All applicable fees apply.

Prohibited Campaigning Directive

The use of Local 47 resources, or the resources of ANY other union or employer — whether hiring musicians or not — by any candidate or member, for the purpose of campaigning for or against any candidate for office in the Local 47 election, is prohibited by the Local's Bylaws and is also a violation of Federal Law. This prohibition includes the use of facilities, equipment or property (including telephones, stamps and stamp machines, computers, copying machines, and any other equipment or materials), official endorsements, use of union logos and/or letterhead, and any campaign activity done on paid time. Additionally, members are barred by Article IX, Section 13 of the Local 47 Bylaws from collecting nominating petition signatures while on Local 47's premises. Further, members are prohibited from campaigning at any time while on Local 47's premises

However, obtaining signatures on public property (i.e., sidewalks surrounding the Local's property or off-site locations) IS permissible, as long as those collecting signatures and the members are using unpaid time (e.g., before or after work for any union or employer, or while on an unpaid break). Nothing in the Bylaws prohibits friends/family of a candidate from soliciting signatures on nominating petitions provided they abide by all the rules listed above.

Electronic Communications Policy

Following the intent of Article IX, Section 12, of the AFM Local 47 Bylaws, it shall be a matter of policy that the rules and restrictions as outlined in said Bylaw shall also apply to all electronic communications published by Local 47, including Overture, the Local 47 website (afm47.org), the Local 47 email newsletter "The Local 47 Beat," any special notices sent by Local 47 via email blast, and all associated social media pages (Facebook, Twitter, Instagram, LinkedIn, etc.).

*Stay tuned to further notices and refer to our election web page at afm47.org/election for updates about the voting process on AFM Local 47 Election Day, **December 13, 2022**. Members with an email on file will receive election updates via email, and those whose emails are not on file or who have opted out of electronic notifications will receive printed announcements by mail. To be sure to get the latest news most quickly, efficiently and cost-effectively, please update your email address on file at afm47.org/directory. Please be sure your mailing and email addresses are current. Now would be a good time to do that!*

AFM Local 47 Rehearsal Rooms: Now Offering Online Booking!

After a long pandemic closure, our rehearsal rooms are currently open Monday through Friday, 10 a.m. to 12:30 p.m. We are now offering expanded scheduling options, and are pleased to announce a brand new online-based booking system! To view our rental rates and safety procedures and make a booking, please visit afm47.org/rehearsals.

Rooms may be also scheduled by contacting 323.993.3172 or booking@afm47.org.

Covid-19 protocols will be in place for your safety.



Is Your Info Current?

Make sure your contact info is up-to-date with our Directory Department to ensure timely delivery of dues statements and important news updates.

afm47.org/directory

323.462.2161

AFM LOCAL **47**

Members-Only Documents Online

Members may log in to the [members section at afm47.org](https://afm47.org/members) and navigate to the "Scales and Documents" page to view members-only documents including Executive Board minutes, CBAs, Local 47 Wage Scales, Bylaws, Suspended/Expelled member lists, Hearing Representative reports, and more.

Recent updates include:

- Musicians' Club 2021 annual audit report
- July 2022 expelled members list

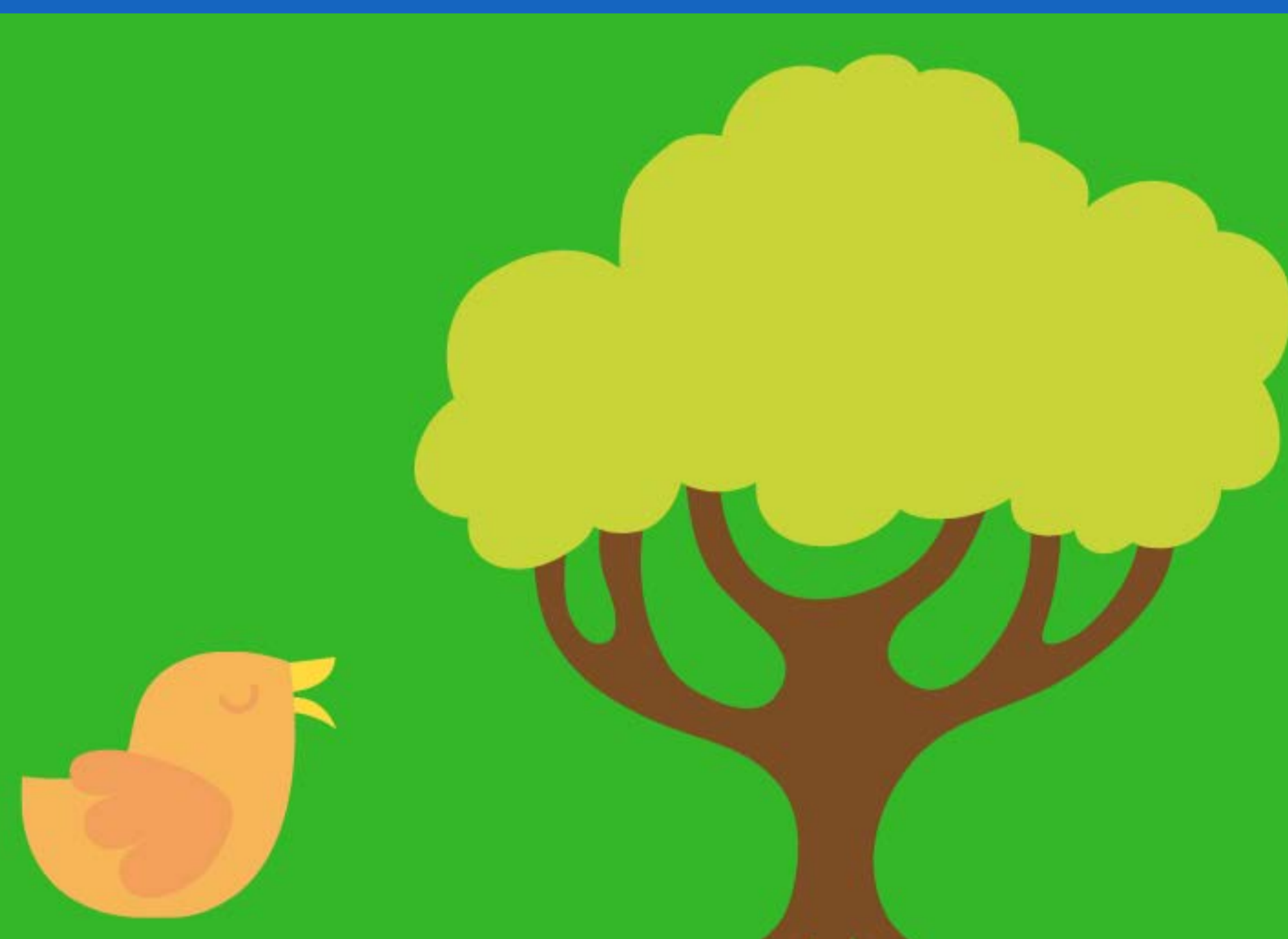
- Minutes

Work Dues Billings

Local 47 is currently processing work dues — previously unbilled — based on wages paid directly during the pandemic years 2020 and 2021.

The Local, faced with a severely reduced staff, chose to focus on making sure wages and benefits were paid, deferring work dues billing.

Thank you for your patience.



Go Paperless!

Sign up to receive work dues statements online @ afm47.org/paperless

Claim Your Money!

[The musicians listed here](#) have not responded to notices of checks in escrow at Local 47. If your name is listed or you know the whereabouts of these musicians or their beneficiaries, please contact our Finance Department:

323.993.3146, bookkeeping@afm47.org

Update Your Beneficiary Card

Your beneficiary card designates the recipient of the Local 47 \$1,000 death benefit. If you need to change your beneficiary, update beneficiary information, or if you just can't remember who you have listed, please contact our Benefits Department for a new card:

(323) 993-3159 | benefits@afm47.org

If you have any change of beneficiary or contact info updates, be sure to also to report them to:

AFM Pension Fund (AFM-EPF) – (800) 833-8065

Film Musicians Secondary Markets Fund –

(818) 755-7777

Sound Recording Special Payments Fund:

(212) 310-9100

AFM & SAG-AFTRA Intellectual Property Rights

Fund: 818-255-7985

Please note: This benefit is not payable to a beneficiary if the member was suspended, expelled or had resigned at time of passing.



This monthly column is your one-stop-shop for information about all the benefits provided by your union membership. Got a question? [Ask us](#) to have the answer featured here.

A Message from AFM-EPF:

New Resources Available From the Pension Fund

American Federation of Musicians and Employers' Pension Fund (AFM-EPF) Trustees understand that this pension benefit is both valuable and complex for participants. As a result, a new effort to assemble some practical, easy-to-understand information is underway and much of it is available right now on afm-epf.org. Even better, you don't have to register for the website to access this information (although we encourage you to do so for additional tools and resources).

With one click to the Participants page, here's what you'll find:

How Our Pension Plan Works

Learn more about AFM-EPF, its Trustees and your pension benefit

[What is the AFM-EPF?](#)

[Role of a Trustee](#)

[How the Plan is Governed](#)

[How the Money Flows](#)

[What the Fund Office Does](#)

[What's Happening with ARPA](#)

[Benefits of Diversification](#)



Retirement is Down the Road

Things to consider and action to take even if retirement is years away

[Tips You Can Use Now](#)

[You Need to Designate a Beneficiary](#)

[How to Register for the Participant Portal](#)

[How the Pension Estimator Works](#)



Life Happens

Tips and information to help you manage life's unexpected events

[You Need to Designate a Beneficiary](#)

[What to Do if You Get Divorced](#)

[How You Can Protect Your Loved Ones](#)

[How and When to Contact the Fund Office](#)



Retirement is Around the Corner

Be prepared. Learn what you need to do before you need to do it!

[Tips for Approaching Retirement](#)

[You Need to Designate a Beneficiary](#)

[How to Register for the Participant Portal](#)

[How the Pension Estimator Works](#)

[Navigating the Application Process](#)

[Optional Forms of Payment](#)

[How to Start Your Benefits](#)



For more information visit:
www.afm-epf.org

Your Health Care & Pension Benefits at a Glance

HEALTH CARE BENEFITS

PROFESSIONAL MUSICIANS LOCAL 47 AND EMPLOYERS HEALTH & WELFARE FUND

The Professional Musicians Local 47 and Employers Health & Welfare Fund is administered by PacFed Benefit Administrators. AFM Local 47 negotiates benefits on behalf of our members. The Health & Welfare Trust provides medical, dental, vision, chiropractic, acupuncture, prescription drugs and life insurance to musicians who qualify for benefits based upon contributions received on their behalf in accordance with Local 47 and AFM contracts and collective bargaining agreements.

Eligibility

Eligibility for enrollment in the Health & Welfare Fund is based upon contributions the Fund receives on musicians' behalf from Participating Employers. A Participating Employer, or an Employers' Payroll Designee, has entered into a Collective Bargaining Agreement (CBA) with the Union which calls for contributions to come to the Health & Welfare Fund. All contributions must come from a Participating Employer; musicians may not "self-pay" into the Health & Welfare Fund.

Coverage

A musician may qualify at one of three levels: Level A (\$1,500+ contribution), Level B (\$1,200-\$1,499 contribution), and Level C (\$700-\$1,199 contribution). Currently the Health & Welfare Fund has contracted with the following benefit providers: Blue Shield, Kaiser Permanente, Landmark Healthplan, Delta Dental, MES Vision underwritten by Gerber Life, and the Prudential Insurance Company of America ("Prudential Life"). To review the Summary Plan Description (SPD), please click [here](#). Any questions regarding a participant or dependent's eligibility and coverage should be directed to the Health & Welfare Fund.

Contact

The Health & Welfare Fund staff can help you with enrollment, coverage and HMO claims. The Health & Welfare Member Services department is available Monday through Friday, 8:30 a.m. to 5 p.m. at 1-800-753-0222 or by email at musicians@pacfed.com.

Website: pacfed-musicians.com

ENTERTAINMENT INDUSTRY FLEX PLAN

The Entertainment industry Flex Plan is an employee benefit plan which combines both Employer Contributions and Employee Contributions to fund benefits including medical, dental, vision, disability, group term life insurance, and dependent care assistance for union members working in Motion Picture and Television. The Flex Plan was established in 1985 to provide Health and related benefits for "Daily-Hire" Union employees working under Collective Bargaining Agreements in the Entertainment Industry.

Eligibility

The Flex Plan covers each person who is employed by an Employer who has entered into a Collective Bargaining Agreement (CBA) with a Local Union providing for Employer Contributions to the Flex Plan. If you are unsure if a specific employer participates in the Flex Plan, contact the Flex Plan. For a complete summary of benefits and information on Employer contributions and Employee contributions, view the Flex Plan Summary Plan Description (SPD).

Coverage

The Plan offers a flexible "cafeteria style" benefit option list in which you design your individual plan according to your needs. If you elect coverage from the Flex Plan Providers, the Flex Plan will make monthly premium payments on your behalf to the carrier(s) you select (provided your account balance is sufficient to pay all of the premiums). Please refer to the Flex Plan Summary of Benefits for descriptions and monthly costs of the coverages offered. If you do not have sufficient funds in your account to pay your premiums, the Flex Plan allows you to "self-pay" the necessary premiums for a period of 12 months.

Contact

Call the Flex Plan Member Services Department at 888.353.9401 (Monday through Friday) between 7:30 a.m. and 5 p.m. (PT). You may also contact the Flex Plan electronically here. Website: flexplan.com

SELF-PAY HEALTH CARE

If a musician does not qualify for coverage under the Health & Welfare Fund or the Flex Plan, Covered California offers individuals and small businesses residing in California to purchase private health insurance coverage at federally subsidized rates. For information about coverage outside of California, visit healthcare.gov. AFM Local 47 members may also contact Mark Cormany of French Cormany Insurance Services at 949.975.1155.



Labor
Community
Services
LOS ANGELES



HAS BEEN AWARDED

\$15
MILLION

TO SUPPORT PROGRAMS AND SERVICES
FOR OUR FAMILIES IN NEED
AND EXPAND SERVICES TO ASSIST
OUR SENIORS AND OUR VETERANS



WENDY CARRILLO
Assemblywoman, District 51



Labor Community Services Awarded Historic \$15 Million Grant

Labor Community Services has been awarded a \$15 million grant in this year's California budget.

This historic news for the organization comes after working closely with Assemblymember Wendy Carrillo and her staff in navigating this request through the State Assembly and State Senate and ultimately to the Governor so that it can be a line item in one of the most historic state budgets in California's history.

"This would not have been possible without Assemblymember Carrillo championing our efforts in Sacramento, along with the support from Assembly Speaker Anthony Rendon and Assemblymember Phil Ting, Chair of the Assembly Budget Committee," LCS released in a statement.

"From Day 1, Assemblymember Carrillo has been a staunch supporter of LCS and has help sponsor many of our community food distribution and COVID-19 vaccinations in the community, especially within the 51st Assembly District."

This award will allow LCS to significantly expand its services to community members and union members who need assistance. Along with strengthening our existing programs, such as the food distributions and utility assistance program, we are seeking to launch new programs that will be able to help fill a void of services for members of our communities who are in the greatest need for help — our seniors and our veterans.

This grant will allow LCS to consolidate its operations under one roof by providing funds to purchase a building that will serve as the headquarters for its operations. "Being able to function as a team in a centralized location will allow us to coordinate our efforts more efficiently and effectively, while also being able to work with our community partners in a greater magnitude so that we can fulfill our mission to help those in need," LCS said in a statement.

43RD ANNUAL

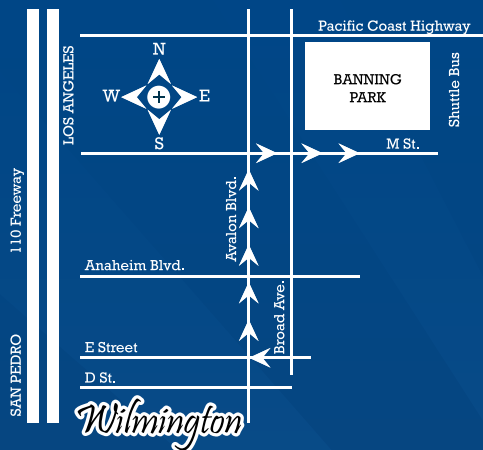
LOS ANGELES/LONG BEACH



HARBOR LABOR COALITION

UNIONS MARCHING FORWARD IN 2022

LABOR DAY PARADE



March Starts At: Broad & E. St. In Wilmington
 Assembly Begins At 8 AM March Departs At
 10 AM Rally at Banning Park at 12 PM
 Speakers, Music, Shuttle Buses, Hot Dogs,
 Soft Drinks, & More!

La Marcha Comienza En: Broad Y E. St En
 Wilmington Formacion Empieza 8 AM La Marcha
 Sale 10 AM Reunion en Banning Park 12 PM
 Voceros, Musica, Autobuses de Transporte, Hot
 Dogs, Sodas, y Mucho Mas!



MONDAY, SEPTEMBER 5, 2022

LABOR DAY COMMITTEE : 7844 ROSECRANS AVE. PARAMOUNT, CA 90723

PHONE : 562.481.7275 OR VISIT US AT WWW.LALBLABORCOALITION.COM OR



Final Notes



In Memoriam

Artie Kane

Life Member. Composer
4/14/1929 - 6/21/2022
Member since: 5/3/1961

Tommy Morgan

Life Member. Harmonica
12/4/1932 - 6/23/2022
Member since: 6/26/1950

John (Johnny) Todd

Member. Piano
10/8/1935 - 7/1/2022
Member since: 1/12/2007

Send your Final Notes remembrances using our online submission form at: afm47.org/overture

or you may send to:

overture@afm47.org

Local 47 Overture Online
3220 Winona Ave.
Burbank CA 91504



Artie Kane

Life Member. Composer

4/14/1929 – 6/21/2022

by Mike Lang, Life Member

So sad to read of Artie's departure...

Artie was so special on so many levels, having had three uniquely successful careers... firstly, as a first call studio pianist, then, as a prolific and talented composer for film and television, and, finally, as the "go-to" conductor for major film composers.

Personally, I am so grateful and indebted to all the encouragement and support he gave me as we first met and got to know one another... quietly recommending me to composers and others...

When we first met, playing together on a recording session, he was immediately both complimentary and helpful to me... letting me know when I was doing something good, and, more importantly, letting me know when there were important things to consider and improve on... mostly just understanding what the specific needs were for recording musicians... being quick, not wasting composers' time with unnecessary questions etc etc.

He always did all of this with a unique charismatic energy and humor too... it was easy for me to see how intoxicating he was to others, and why so many people wanted him to be a part of their musical life. His spontaneity, talent and unerring craft so identified him as a "must have" on composer's and arranger's projects.

Maybe the most important thing I learned from Artie was how to "read" the needs of each specific composer or situation, how to understand what the best approach to take would be on each individual project... and... always with an upbeat "twinkle" attached (!).

And... gratefully... this relationship continued to grow as I had the pleasure of working with Artie as a composer on so many of his scoring sessions, and, then, as a conductor... all of the "good stuff" just continued...

He was equally generous to so many throughout his amazing professional life.

Also... to note... when Artie retired, he did a series of solo piano videos (on his FaceBook pages)... playing many of his favorite songs from the Great American Songbook.

In those performances, he always made me feel that he totally "got" the intention of the composer... that his harmonic and arranging choices really went to the focal point of each song in such a striking way...

My warm condolences and love to JoAnn and his family. He will be profoundly missed by many...

In loving memory of



Glenn Arlington Mitchell

July 26 1941 - April 6 2022

Glenn Mitchell

Life Member. String Bass

7/26/1941 – 4/6/2022

'Jazz music will live forever in my heart'

by Zoila Ramos Mitchell

Glenn Arlington Mitchell — musician, writer, artist, conductor, husband and lover of jazz music — was born in the city of Hollywood on July 26, 1941. His father, Uber Arlington Mitchell, was from Colorado, and Elle Foust was from California.

From an early age he studied piano in the city of El Segundo, where he lived and spent his childhood and adolescence, and completed his elementary and high school studies. Many memories would come to his mind when he would ride his bicycle in a tunnel that was under construction near LAX airport.

He enrolled in the Army and went to Vietnam fulfilling his service and obtaining an honorable medal. He then took a job as a driver and worked with several companies as a member of Teamsters Local 46, where he stood out as secretary and treasurer for more than 10 years, fulfilling his functions at all times. He had many ideas of prosperity and progress for the members of the Teamsters. Later when he retired from work, he dedicated his time to music as a member of the American Federation of Musicians Local 47, playing the double bass and congas in concerts, clubs, institutions, private parties, beach residences, hotels, etc.

Being a born writer by nature, over the years he became a great writer specializing in jazz music. He was a writer who possessed a literary wealth, he began to write for L.A. Jazz Scene magazine. His writing style was filled with great naturalness and spontaneity. His readers liked very much his simple narrative language that always served to promote and spread the great values of jazz music. It was easy for Glenn to understand and comment on musical notes since he cultivated his love for music since he was a young child. That is why in each article, due to his musical acuity that was perfected over the years, he was able to decipher if the musical group or singer was in accordance with a particular musical theme.

He passed away on April 6, 2022 at 8:15 a.m. at the P.I.H. Hospital in Whittier, of prostate cancer after several years of suffering from this disease.

Rest in peace my husband, my love, and may the Lord God Jehovah have you in His Holy Glory.

Open Mic

share YOUR story
with
the Overture

OPEN MIC!



Got a story to tell?

AFM Local 47 welcomes submissions from
our members!

Please share about your latest union recording,
performance or event by sending us your story
and photos using our online submission form at

afm47.org/overture.

Letters



We want to hear from you!

Send in your Letters to the Editor:

overture@afm47.org

3220 Winona Ave.

Burbank CA 91504

Please keep within a maximum of 400 words.
For full submission guidelines, please [click here](#).

Membership Dues Policy

Membership Dues Fees

Regular Member

Annual Dues: \$210

Semi-Annual Dues: \$110

Life Member

Annual Dues: \$110

Inactive Life Member

Annual Dues: \$90

Make checks or money orders payable to:

AFM Local 47,
3220 Winona Ave.
Burbank CA 91504

You may also make payments with VISA, MasterCard, Discover, AmEx by phone at 323.993.3116 or at afm47.org/dues

Dues Schedule

Annual and Semi-Annual Membership Dues for Regular, Life and Inactive Life Members are due **Jan. 1** of each year. Payment must be received by **March 31** (three-month grace period) to avoid suspension. If not paid by this date, a \$75 reinstatement fee will be assessed. **Payment must be paid by June 30 to avoid expulsion.**

Likewise, Semi-Annual Membership Dues for Regular Members are due **July 1** and must be received by **Sept. 30** (three-month grace period) to avoid suspension. If not paid by this date, a \$75 reinstatement fee will be assessed. **Payment must be paid by Dec. 31 to avoid expulsion.**

Please note: Inactive Life Members do not have all of the same rights as privileges as Regular and Life Members, such as the right to vote in Local elections. Please review the AFM Local 47 Bylaws for complete information.

Work Dues Notices

At its Dec. 9, 2014 meeting, the Local 47 Executive Board passed the following motion:

“As a matter of policy, Local 47 will no longer mail checks to members or non-members whose delinquent work dues liability is in excess of \$1,000. When the Local receives a payroll check for anyone who has such a delinquency, the member or non-member shall be contacted by the Secretary/Treasurer’s office. Checks within 14 days of expiration will be deposited in the Escrow Fund.”

If you fall into that category, you will receive a postcard informing you that your check is in the office. You can call the Secretary/Treasurer’s office at (323) 993-3159 to discuss your work dues delinquency and to make arrangements to pick up your check.

Notice From the Executive Board: Work Dues Delinquency and Suspension

1) Local 47 members whose work dues delinquency exceeds \$500 shall be suspended; and

2) Non-Local 47 members whose work dues delinquency exceeds \$500 shall be referred to the IEB as provided in the AFM Bylaws.

In order to reinstate membership, a \$75 reinstatement fee will be assessed.

Resignation Policy

In order to resign in good standing, you must submit your written request to Local 47 before your membership is suspended. Though dues are due Jan. 1 and July 1, current grace periods extend to March 31 and Sept. 30, respectively; suspensions are posted April 1 and Oct. 1.

In addition to membership dues, all other financial obligations, Local and International, must be paid prior to resignation. Your letter of resignation will be presented at the following Executive Board meeting and a written response will be mailed to you. If you wait, you will be required to pay another half year’s dues and/or clearance fee.

AFM Local 47 Refund/Return Policy

Unless otherwise specified, Membership and Work dues payments made to AFM Local 47 are not refundable. Merchandise or other items purchased directly from AFM Local 47 may be returned within fourteen days of purchase upon return of the item(s) in the condition in which you received said item(s). To request a refund and return content, please contact AFM Local 47, Attn: Vice President's Office, 323.993.3172, merchandise@afm47.org, 3220 Winona Ave. Burbank CA 91504, to receive instructions on returning your product(s).

HELP A MUSICIAN IN NEED

Be an anonymous donor to the Local 47 Musicians Relief Fund. Send contributions to the Secretary's office or call (323) 993-3159 for more information.

Multiple-Card AFM Member Rebate

Did you know? If you hold membership in three or more Locals throughout a full calendar year, you are entitled to a rebate from the AFM.

Under the rebate program, membership in a base of two Locals must be established in order for a member to qualify for a rebate. The International Secretary/Treasurer's office has determined that a musician's membership in his or her "Home Local" and the subsequent Local of longest tenure shall be designated as the two base Locals. The Secretary/Treasurer's office will then rebate the appropriate per capita dues for membership in the third Local and any other Local(s) beyond three to which a member belonged for the entire previous calendar year.

To petition for a Multiple-Card Member Rebate, members should fill out the form and return it to the Secretary/Treasurer's office together with copies of all their paid-up membership cards, receipts of canceled checks for annual dues from all Locals, or a letter from each Local stating that the petitioner was a member in good standing of the Locals for the full year prior. Rebates will be issued after Jan. 1.

Members may download the rebate form from the international AFM website [here](http://afm.org) (afm.org login required; locate the rebate form under "Miscellaneous" in the Document Library).

Notice to All Persons Entering or Utilizing the Property of the Musicians' Club* of Los Angeles:

The premises of the Musicians' Club of Los Angeles are reserved for the exclusive use by the officers, employees, and Full, Youth, Life or Inactive Life Members in good standing of AFM Local 47 and the American Federation of Musicians. All other persons must receive written permission from the office of Local 47's president to enter or utilize these premises. Local 47 reserves the right to remove and to cite for trespass any party found on these premises who does not fulfill the above conditions of occupancy. (Note: This notice is not applicable to those making deliveries to AFM Local 47, or customers of and those making deliveries to tenants of the Local 47 headquarters.)

** The Musicians' Club of Los Angeles, Inc., is a California Non-Profit Corporation incorporated in 1926. It owns all land and improvements where AFM Local 47 conducts its business. The Corporation rents space to other tenants, mainly industry related. All members of AFM Local 47 are also members of the Musicians' Club of Los Angeles.*

Do Not Work For...

The list published at afm47.org/donotworkfor.html contains the names of employers with whom Local 47 currently has disputes.



If you have any questions about this list please contact the President's Office: 323.993.3181

Notice of Strike Sanctions

On June 24, 2015, strike sanctions were approved by the Los Angeles County Federation of Labor against:

Cinema Scoring
CMG Music Recording
Peter Rotter Music Services

If and when any of the aforementioned parties calls a non-union engagement, other labor unions have agreed to stand in solidarity with Local 47 and not cross our line.

If you are being pressured to participate in non-union work or take financial-core status and quit the union, know that it is illegal for employers or employers' representatives to coerce, pressure or otherwise influence any employee to take fi-core status under the National Labor Relations Act. Should this happen to you, call 323.993.3181.

Your Union will take action — with legal counsel if necessary — on your behalf to ensure your rights as a union worker are protected.

Auditions

NOTICE OF AUDITIONS

**New West Symphony announces
an audition for:**

Principal Double Bass

Audition will be held on September 28, 2022.
Final round will immediately follow the preliminary
round of audition.

Mail a cover letter and a one-page resume along with
\$25 refundable deposit to the following address:

New West Symphony
Attn: Auditions Committee
2100 Thousand Oaks, Ste D
Thousand Oaks, Ca 91362

Resume and deposit **MUST** be received by Thursday,
August 25, 2022.

Audition repertoire will be posted on the
New West Symphony website:

www.newwestsymphony.org/orchestra-positions/

Auditions

NOTICE OF AUDITIONS

**New West Symphony announces
auditions for:**

Principal Trombone

Audition will begin on the morning of Tuesday, September 27, 2022. Final round will immediately follow the preliminary round of the audition.

Mail a cover letter and a one-page resume along with \$25 refundable deposit to the following address:

New West Symphony
Attn: Auditions Committee
2100 Thousand Oaks, Ste D
Thousand Oaks, Ca 91362

Resume and deposit **MUST** be received by
Thursday, August 25, 2022.

Audition repertoire will be posted on the
New West Symphony website:

www.newwestsymphony.org/orchestra-positions/

Auditions



Roger Goulette
Chairman, Board of Directors

Kelly Ruggirello
President

The Long Beach Symphony announces auditions for the following positions:

Section Violin I (Chair 14)
Section Violin II (Chairs 8, 9, 11)
Audition dates for all seats:
November 16th and 17th, 2022

The Preliminary Round starts Wednesday, November 16th, 2022
The schedule of subsequent rounds immediately following preliminaries will be determined at auditions.

Auditions will be held at the Long Beach Terrace Theater at 300 Ocean Blvd,
Long Beach, CA

Submit a one-page resumé in Word or PDF format to:

auds@longbeachsymphony.org

Please specify **Violin Auditions** in the subject line.

Resumés must be received by **Wednesday, November 2nd, 2022**

A refundable \$50 deposit is required by check or money order.

Deposits must be postmarked by **Friday, November 11th, 2022**

Additional details emailed upon receipt of resumé.

No phone calls please. Repertoire information will not be given over the phone.

Long Beach Symphony performs five Classical, five POPS! And TBD Educational Concerts
per season.

Current Base Scale: \$148 Rehearsal / \$186 Performance

2022-2023 Base Scale subject to Collective Bargaining Agreement

Assistant Principal: 125% of Scale - Principal: 150% of Scale

*The winning candidate(s) will be required to show proof
of U.S. citizenship or eligibility to work.*

*LBSA's current policy requires proof of vaccination against COVID-19 for work eligibility.

Auditions



THE SANTA BARBARA
SYMPHONY
Nir Kabaretti, Music & Artistic Director

PRINCIPAL FLUTE

NOV. 21-22, 2022

Application Deadline:

October 10, 2022

Online Application Form

thesymphony.org/auditions

Employment will begin as soon as mutually agreeable to both the winner and the Santa Barbara Symphony.

Advertise

ADVERTISE

WITH AFM LOCAL 47!

Overture Online App

— Released monthly —

The Local 47 Beat

— Emailed biweekly —

»»» —————> RESERVE TODAY <————— «««

View rates, specs & publication schedules
@ afm47.org/advertise

CONTACT: advertising@afm47.org

*For information on posting auditions, please visit
afm47.org/auditions.html*